




Quality Controller Report

Po No:	2023JL0915/ 2023JL0915-1		
Inspection Company:	JULYBAMBU		
Inspection Location:	CHINA		
Products Name:	Bamboo Plywood	Moisture Content:	8-12%
Loading date:	2023.12.20	Inspection Date:	2023.12.1 - 2023.12.15
Order Quantity:	Loading (Cape Town) (726pic / 9 Pallets)	Size: 2440*1220*4mm (450 Piece)	
		Size: 2440*1220*6mm (300 Piece)	
		Size: 2440*1220*9mm (200 Piece)	
	Loading (Durban) (726pic / 9 Pallets)	Size: 2440*1220*12mm (150 Piece)	
		Size: 2440*1220*15mm (120 Piece)	
		Size: 2440*1220*19mm (100 Piece)	
		Size: 2440*1220*30mm (70 Piece)	
		Size: 2440*1220*40mm (60 Piece)	

Inspection Report

● 2440*1220*4mm

Thickness : 4mm	Length: 2440mm	Width: 1220mm
		
Tolerance:+ 0.2mm	Tolerance:+2mm	Tolerance:+1mm
The Result:	Height and thickness all the size are correct.	

● 2440*1220*6mm

Thickness : 6mm



Tolerance: + 0.3mm

Length: 2440mm



Tolerance: +2mm

Width: 1220mm



Tolerance: +1mm

The Result: Height and thickness all the size are correct.

● 2440*1220*9mm

Thickness : 9mm



Tolerance: + 0.3mm

Length: 2440mm



Tolerance: +2mm

Width: 1220mm



Tolerance: +1mm

The Result: Height and thickness all the size are correct.

● 2440*1220*12mm

Thickness : 12mm



Length: 2440mm



Width: 1220mm



Tolerance: + 0.1mm

Tolerance: +1mm

Tolerance: +1mm

The Result: Height and thickness all the size are correct.

● 2440*1220*15mm

Thickness : 15mm



Length: 2440mm



Width: 1220mm



Tolerance: + 0.1mm

Tolerance: +1mm

Tolerance: +1mm

The Result: Height and thickness all the size are correct.

● 2440*1220*19mm

Thickness : 19mm

Length: 2440mm

Width: 1220mm



Tolerance: + 0.2mm

Tolerance: +1mm

Tolerance: +1mm

The Result: Height and thickness all the size are correct.

● 2440*1220*30mm

Thickness : 30mm

Length: 2440mm

Width: 1220mm



Tolerance: + 0.1mm

Tolerance: +1mm

Tolerance: +1mm

The Result: Height and thickness all the size are correct.

● 2440*1220*40mm

Thickness : 40mm



JULY BAMBOO WWW.JULYBAMBU.COM

Length: 2440mm



JULY BAMBOO WWW.JULYBAMBU.COM

Width: 1220mm



JULY BAMBOO WWW.JULYBAMBU.COM

Tolerance: + 0.2mm

Tolerance: +2mm

Tolerance: +1mm

The Result: Height and thickness all the size are correct.

● Moisture Content And Package



JULY BAMBOO WWW.JULYBAMBU.COM



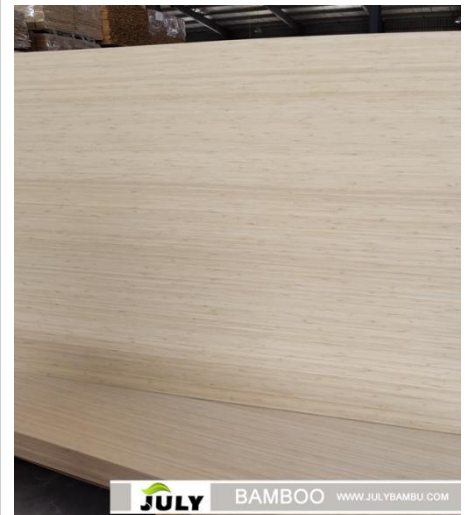
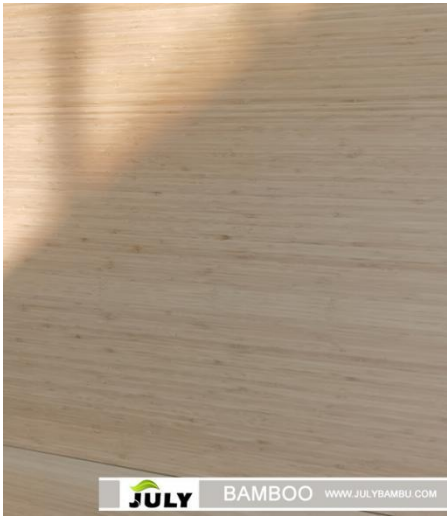
JULY BAMBOO WWW.JULYBAMBU.COM



JULY BAMBOO WWW.JULYBAMBU.COM

The result: that's good

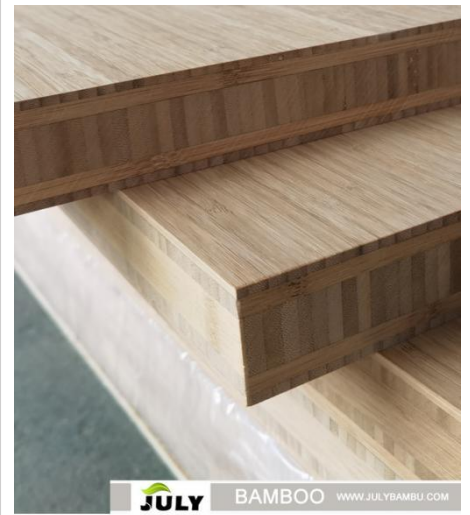
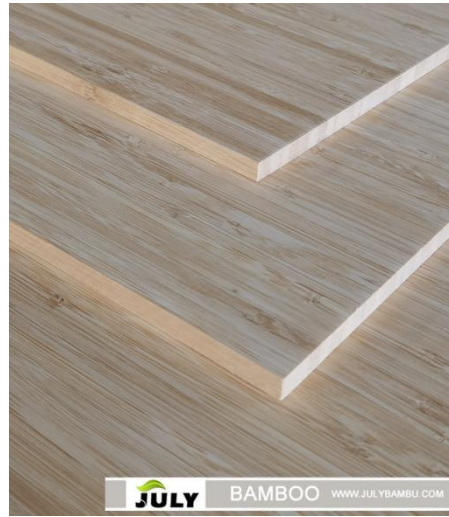
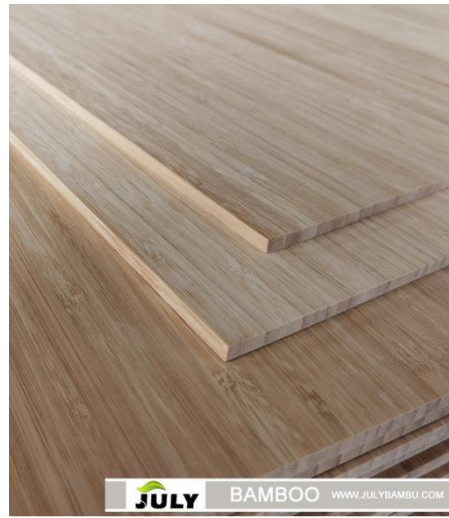
● The Face (Carbonized) 2440*1220mm



The Result:

Face and side all no holes, all perfect like above picture.

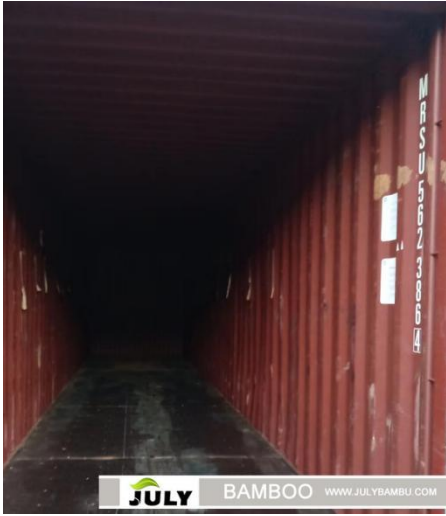
● The Side (Carbonized) 2440*1220mm



The Result:

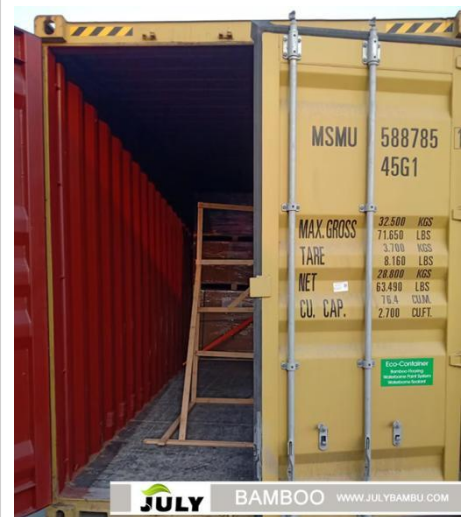
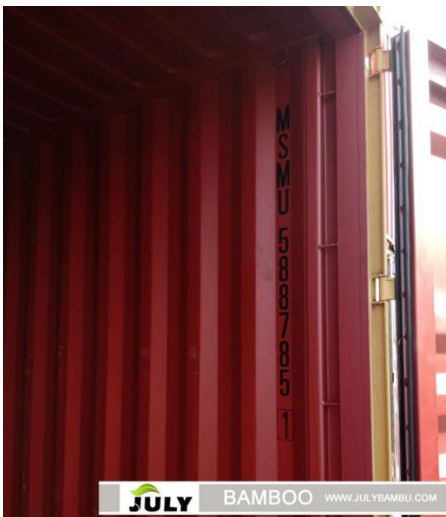
Face and side all no holes, all perfect like above picture.

● Loading (Cape Town)



The result: that's good

● Loading (Durban)



The result: that's good

Inspector: CHEN ZHIHUI

Inspection Date: 2023.12.1 - 2023.12.15